

ACCOMMODATION OPTIONS AROUND RYNFIELD

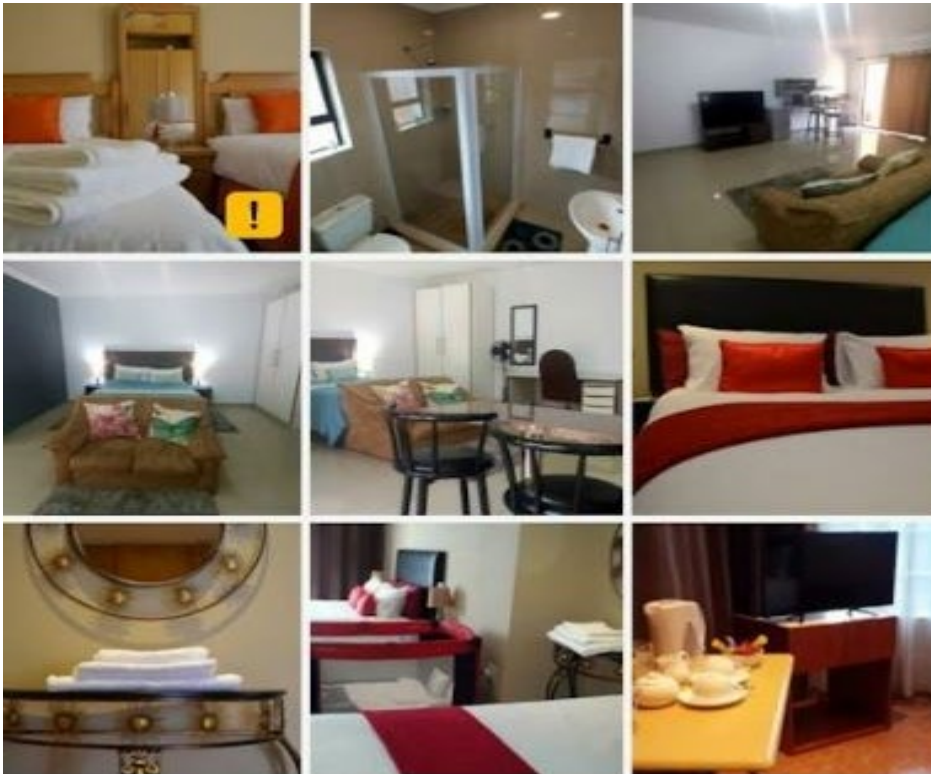
Please note we did not visit this venue.

Kindly enquire directly with them for their rates and possible shuttle requirements

4th Avenue Guest House

77 4th Ave, Northmead, Benoni, 1501 • 083 793 0949

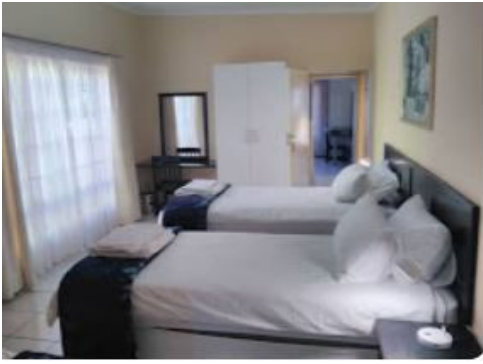
<https://www.google.com/travel/hotels/s/ncE6iFwUcgqE2etW8>



Backpackers Connection

91 Glen Norton Rd, Norton's Home Estates, Johannesburg, 2000 • 011 963 3059

<https://www.google.com/travel/hotels/s/xnmH7BdcrFMrEQa88>



Summer Garden Guest House (The Flower Box) 4-star hotel

34 8th Ave, Northmead, Benoni, 1501 • +27 76 497 0952

bookings@summergarden.co.za

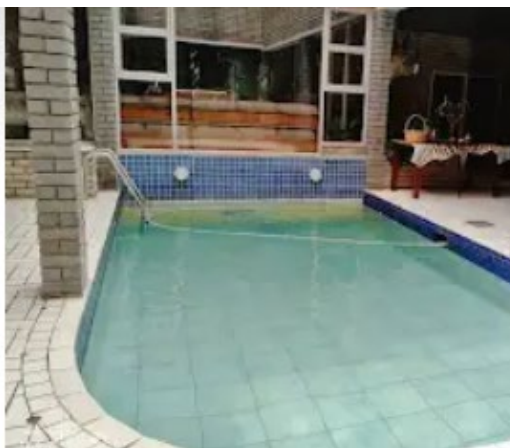
http://www.summergarden.co.za/?gclid=EAIaIQobChMIiY2UrNja-gIVO4BQBh3GvwPWEAAYASAAEglufvD_BwE



Len's B&B Guest House 3-star hotel

12 Nagel St, Lakefield, Benoni, 1501 • 011 894 8039

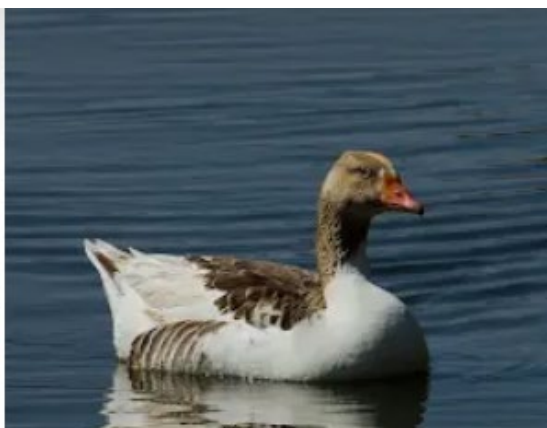
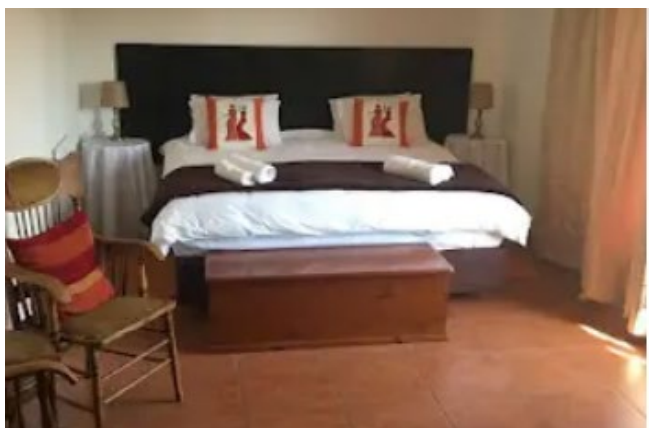
<https://www.google.com/travel/hotels/s/7oTRuXmEHDKS622o9>



Bottom of Boden

Small Farms, 224 Boden Rd, Jatniel, Benoni, 1509 • 084 631 6009

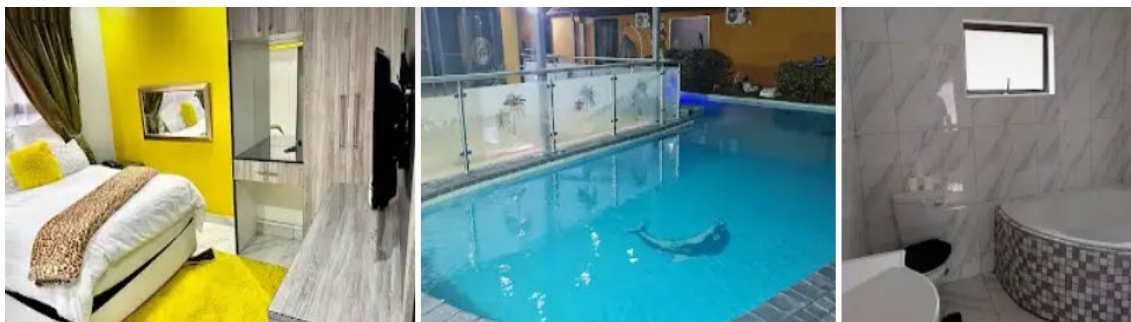
<https://www.google.com/travel/hotels/s/VdQsaxHJNPsU5Nnk9>



National Lodge

56 Edward St, Western, Benoni, 1500 • 064 075 9094

<https://www.google.com/travel/hotels/s/qavYo2rh54TUfehcz>



13th Avenue Guesthouse Benoni

4 13th Ave, Northmead, Benoni, 1501 • 083 659 3449

<https://www.google.com/travel/hotels/s/vvUFiMjEoUdquNF29>



Moye Guest House

31 Wordsworth Rd, Farrarmere, Benoni, 1501 • 083 744 1390

<https://www.google.com/travel/hotels/s/rdGLMRYMi7SPMVTz6>

